

## Native Medicinal Plant Research Garden (KU Field Station)

The garden was established in 2010 as a project of the **KU Native Medicinal Plant Research Program**, a collaboration between the botany lab of Kelly Kindscher (Kansas Biological Survey) and the medicinal chemistry lab of KU Prof. Barbara Timmermann.

- **Program activities:** Study of the historical medicinal uses of Great Plains plants; collection and testing of plants for naturally occurring medicinal compounds (for antioxidant, anti-inflammatory, anti-cancer properties); development of the Prairie Ethnobotany Database; work with students from both KU and Haskell; educational outreach.
- **Potential research functions of the garden:** 1) comparison of chemical makeup in the same species grown at the garden site and in a native setting; 2) as a site for growing particular species of interest under a variety of conditions and testing for differences in the potency of their medicinal compounds; and 3) as a site for generating additional seed and plant material, as needed, for plants of interest.
- Students in the fields of environmental studies, engineering, journalism, architecture, fine arts and geology all have taken part in projects at the garden.
- Land for the garden site was provided by KU Endowment.

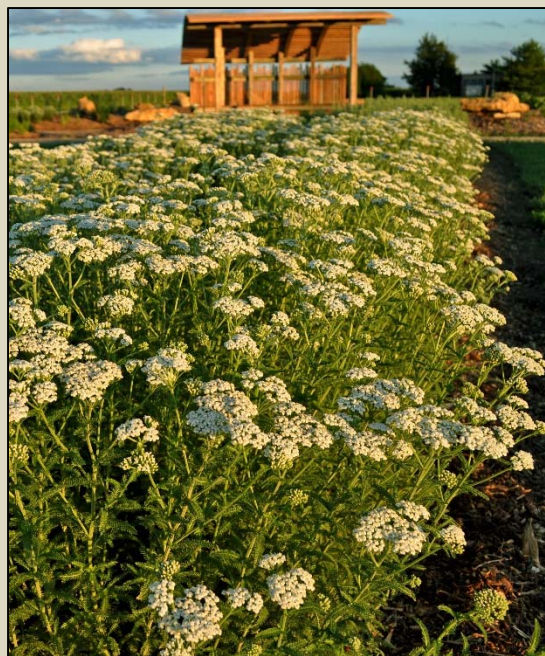
### Garden features

**Research area:** 50 x 260 feet, about 25 species of native plants, including wild tomatillo, echinacea, yarrow, various mints, white sage, milkweeds, stinging nettle and others.

**Demonstration/show garden:** 70 x 80 feet, with some 70 medicinal plants (native mints, echinacea species, milkweed species, tea/scented plants, native edible plants, classical European medicinals, and native plants that have been included in the U.S. Pharmacopeia and National Formulary). Planted May 2011 by volunteers.

**Shade structure:** Built entirely from reclaimed lumber from Westar.

**KU Student Farm:** Established 2011 as a community garden for students, faculty and staff. Run by student coordinators.



[nativeplants.ku.edu](http://nativeplants.ku.edu)

**KU** KANSAS  
BIOLOGICAL  
SURVEY  
The University of Kansas

[biosurvey.ku.edu](http://biosurvey.ku.edu)

[www.facebook.com/ksbiosurvey.kufieldstation](http://www.facebook.com/ksbiosurvey.kufieldstation)